

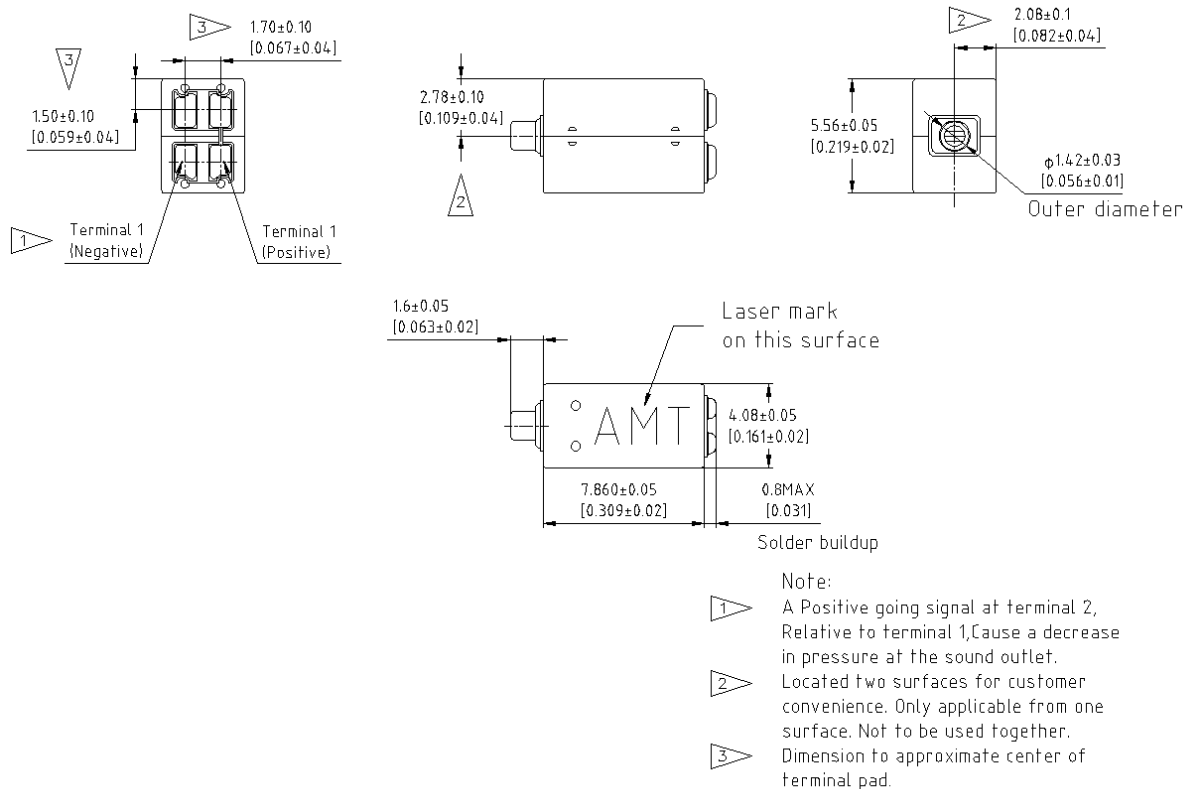
# ABADB-180-44-001

## Advantages:

- Max. output achieve 138dB.
- Can be used in BTE.

## Mechanical data:

- Dimensions:



- Port location: 12S
- Solder type: SAC305, and ROHS compliance

## Electrical properties:

- Isolation: The case will be electrically isolated from internal coil
- DCR and impedance:

Item	specification
DC resistance	$44\Omega \pm 10\%$
Imp@ 1kHz	$92\Omega \pm 15\%$

# ABADB-180-44-001

## Acoustic specification:

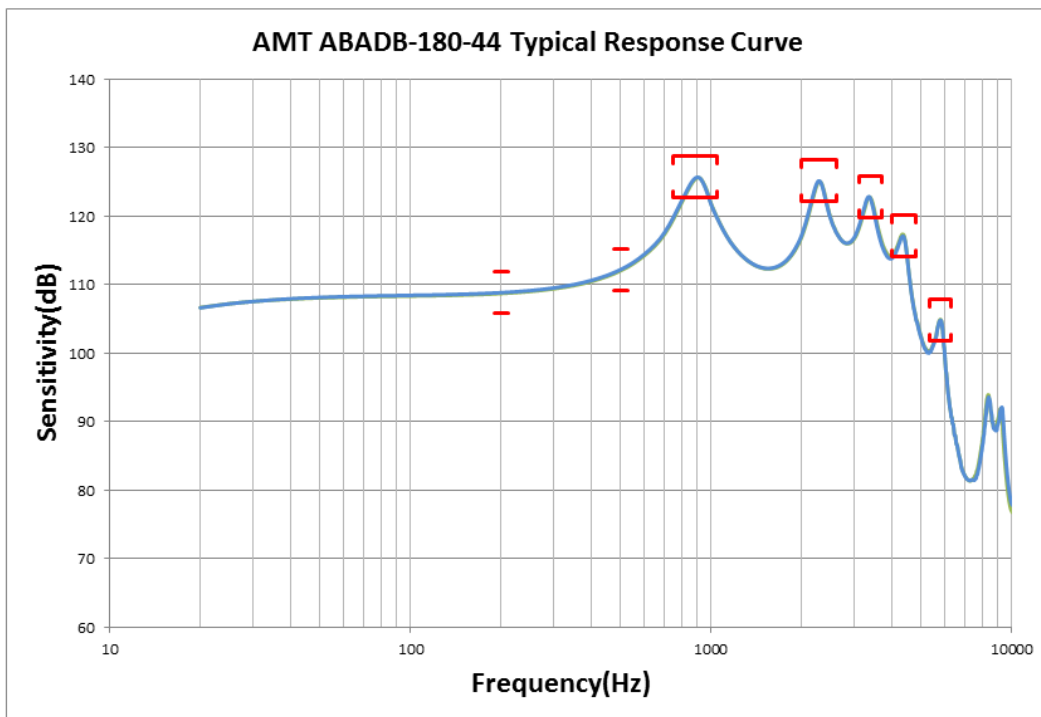
### 1, Test condition

1.1 Driver: 2.24mA

1.2 Tube and cavity: 8mm×1mm ID + 28mm×1.5mm ID + 25mm×2mm ID + 18mm×3mm ID + 2 cc coupler.

1.3 Source requirements: source impedance <1ohm.

### 2, Typical response curve and specification:



Specification	Frequency(Hz)	Minimum	Nominal	Maximum
Sensitivity	200	106	109	112
Sensitivity	500	109	112	115
Peak 1	750-1050	123	126	129
Peak 2	2000-2600	122	125	128
Peak 3	3100-3700	120	123	126
Peak 4	4000-4800	114	117	120
Peak 5	5300-6300	102	105	108

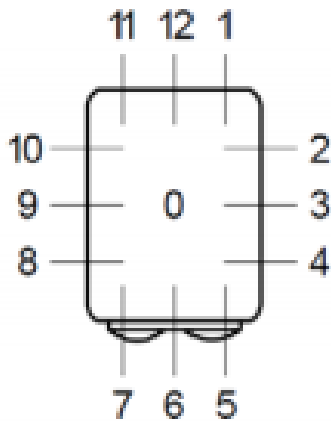
### 3, Distortion specification:

Frequency(Hz)	Drive (mA)	Limit (%)
1/3 Peak 1	2.24	5%
1/2 Peak 1	2.24	5%

# ABADB-180-44-001

## Port location explanation:

- Example 12S, 12 indicates the port location, S indicates tube on the centerline, details refer to below:



### Port detail code:

- N – no tube
- B – tube away from the cover
- C – tube near the cover
- S – tube on the centerline
- T – port on Top surface
- O – other situation, check the drawing

## Storage and operating requirements:

- Follow below table:

Item	Temperature (°C)	Humidity (%RH)	barometric pressure (hPa)
Storage	-40 ~ 63	10 ~ 60	500 ~ 1060
Operating/test	0 ~ 40	45 ~ 85	860 ~ 1060
Judgment	18 ~ 22	60 ~ 70	860 ~ 1060

Website: [www.amtacoustic.com](http://www.amtacoustic.com)

Office Tel: (+86) 0519-81882133

Mail box: [sales@amtacoustic.com](mailto:sales@amtacoustic.com)

Address: No.7 Lanxiang Road economic development zone  
Wujin district Changzhou City China