

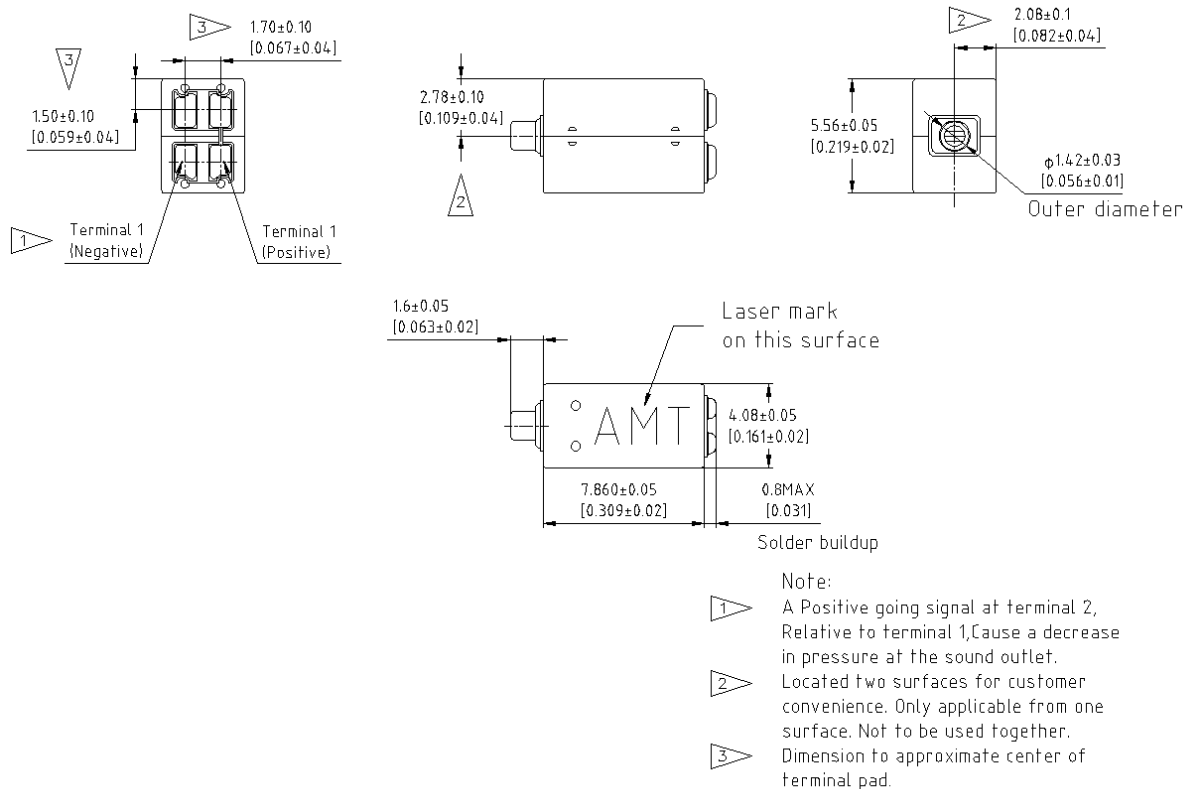
ABADB-180-35-001

Advantages:

- Max. output achieve 138dB.
- Can be used in BTE.

Mechanical data:

- Dimensions:



- Port location: 12S
- Solder type: SAC305, and ROHS compliance

Electrical properties:

- Isolation: The case will be electrically isolated from internal coil
- DCR and impedance:

Item	specification
DC resistance	$35\Omega \pm 10\%$
Imp@1 kHz	$95\Omega \pm 15\%$

ABADB-180-35-001

Acoustic specification:

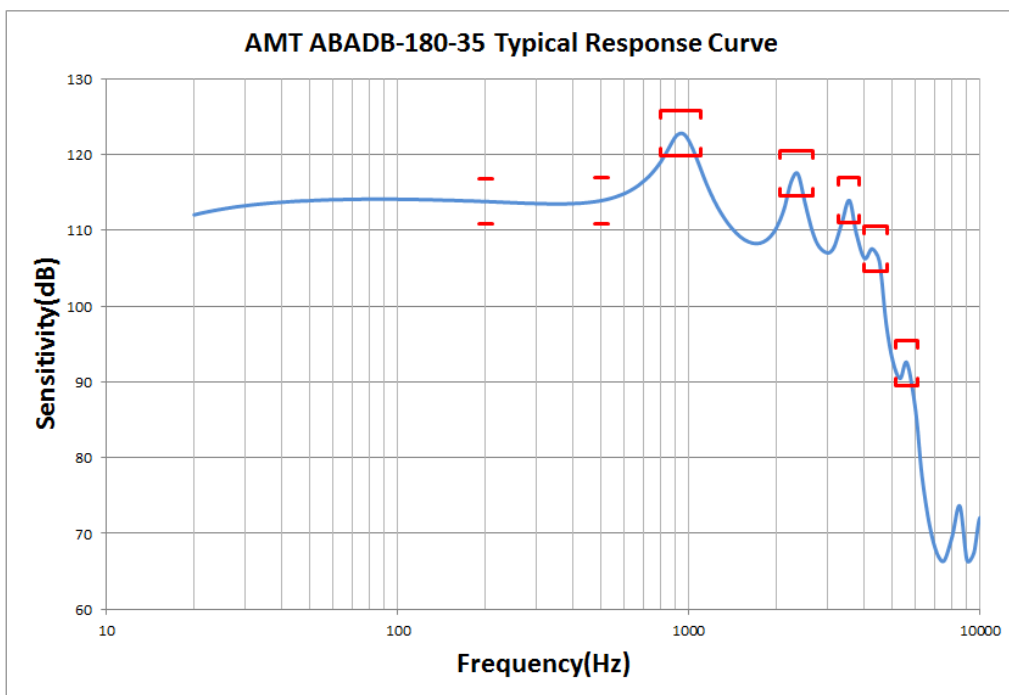
1, Test condition

1.1 Driver: CV 187mVrms

1.2 Tube and cavity: 8mm×1mm ID + 28mm×1.5mm ID + 25mm×2mm ID + 18mm×3mm ID + 2 cc coupler.

1.3 Source requirements: source impedance <1ohm.

2, Typical response curve and specification:



Specification	Frequency(Hz)	Minimum	Nominal	Maximum
Sensitivity	200	111	114	117
Sensitivity	500	111	114	117
Peak 1	800-1100	120	123	126
Peak 2	2050-2650	114	117	120
Peak 3	3250-3850	111	114	117
Peak 4	4000-4800	105	108	111
Peak 5	5100-6100	90	93	96

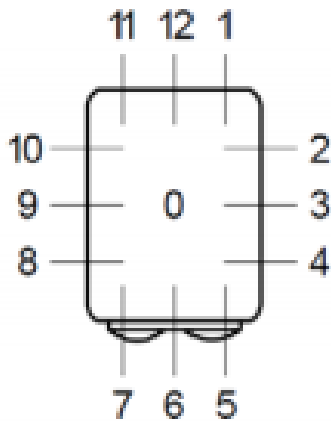
3, Distortion specification:

Frequency(Hz)	Drive (Vrms)	Limit (%)
1/3 Peak 1	0.187	5%
1/2 Peak 1	0.187	5%

ABADB-180-35-001

Port location explanation:

- Example 12S, 12 indicates the port location, S indicates tube on the centerline, details refer to below:



Port detail code:

- N – no tube
- B – tube away from the cover
- C – tube near the cover
- S – tube on the centerline
- T – port on Top surface
- O – other situation, check the drawing

Storage and operating requirements:

- Follow below table:

Item	Temperature (°C)	Humidity (%RH)	barometric pressure (hPa)
Storage	-40 ~ 63	10 ~ 60	500 ~ 1060
Operating/test	0 ~ 40	45 ~ 85	860 ~ 1060
Judgment	18 ~ 22	60 ~ 70	860 ~ 1060

Website: www.amtacoustic.com

Office Tel: (+86) 0519-81882133

Mail box: sales@amtacoustic.com

Address: No.7 Lanxiang Road economic development zone
Wujin district Changzhou City China